

TIER 1 GROUP

Capabilities Brief

T1G.com



Weapons & Tactics

Operational Medicine

Breaching - Dynamic Entry

On / Off-Road Tactical Driving

Full Mission Profiles

Scenario Development

Facility Rentals

TRAINING YOU FOR TOMORROW'S THREATS



Cage Code 4MMC6
UEI LW5BG8KKU8B5

The T1G Difference

T1G is wholly owned by **Cerberus Capital**, a significant investor in the Defense Industry with over \$65 billion under management. T1G provides top-tier training, facilities, and resources designed to meet the unique and specific requirements that today's elite units and operators need to train effectively.

T1G's unwavering mission is to provide world-class facilities and staffing. We offer expert turnkey training solutions, facility rental, or customized CONUS / OCONUS solutions. **Onsite lodging and meals** mean one trip and lower per diem costs that compress time and conserve your budget. Training at T1G achieves **100% readiness in less time with measurable cost savings.**

Our commitment to rapidly adapt and deliver unique and specific multi-discipline training and purpose-built resources is unparalleled. Our expertise in weapons and tactics, operational medicine, tactical driving, and dynamic entry supports advanced scenario development, Situational Training Exercises, and Full Mission Profiles for team to group-sized elements. T1G supports your unit's operational tempo and mission profile to maximize their time.

T1G values every possibility to support your needs and appreciates the opportunity to win your business.

When you need training, please reach out to us. One of our highly qualified Technical Liaisons will show you how to maximize your training effort within your budget. That's our job.

Call us anytime at 01.866.496.9916

For the latest insight into T1G's capabilities and additional information: **T1G.com**





Site Directory

8 Reason Why T1G is the Best Training Value.....	2	Urban Combat Compound • Live-Fire Shoot Houses.....	26
A Day on the Range.....	3	100-yard Multipurpose 'Turner' Range.....	28
T1G Memphis - Full Site Map	4	150-yard Multipurpose Range	28
T1G Memphis - North Training Area Inset.....	5	Rogers Range	29
Customized Full Mission Profile & Pre-Deployment Training	6	SOF Skills Complex Multipurpose Range	29
Weapons & Tactics.....	8	300 yard 270° Hogan's Alley Multipurpose Range	30
Operational Medicine	10	Helo Landing Zone / Towers/300 yard Range	31
H-60 Medical CASEVAC Trainer.....	13	1000m. Known Distance Range	32
Confined Space/Collapsed Structure Trainer	14	Unknown Distance Range.....	33
Breaching & Dynamic Entry.....	15	Off-Site Capabilities.....	34
On/Off-Road Technical Driving	18	On-Site Lodging (L-Fac)	35
2.6 Mile WPS Certified High-Performance Live-Fire Track.....	20	On-Site Dining (D-Fac) seats 60+.....	36
2-Mile WPS Certified Unimproved Roads Track	21	Fitness Center/DoJo/Common Areas	37
Off-Road Driving Trails and Engineered Obstacles.....	22	(11) Climate-Controlled Classrooms	38
10-Acre Live-Fire Wadi and Two Urban Sniper Hides	23	Armory - DoD 5100.76-M compliant, BATF approved	38
30-Acre (MOUT) Village with DZ/LZ	24		
Force-on-Force CQB Training Center	25		



Reasons why T1G consistently provides the best training value on the planet

1. A True, ONE-STOP Training Company

- T1G meets and exceeds most Pre-deployment and Full Mission Profile training requirements for top-tier weapons and tactics, operational medicine, breaching, and tactical on/off-road driving. Complete all your training in one trip and compress white space.
- **Onsite meals and modern lodging facilities** (male and female) mean zero hassles for transit and gear storage. All classrooms and ranges are within walking distance. Night time training is easy to facilitate.
- **DoD 5100.76M compliant, BATF approved secure storage facilities** can accommodate your provisions.
- **Zero Fire/Noise Restrictions** mean around-the-clock training evolutions. T1G is fully equipped to help develop relevant scenarios to meet your unique training requirements.

2. Dwell Time is Improved

T1G is committed to efficiency. Students receive 33% more training time and accomplish more in compressed time space. T1G helps you to complete more training in multiple disciplines that ultimately results in improved dwell time for your units.

3. T1G Saves Time and Travel Costs

T1G leverages your budget and white space to its full potential, achieving 100% readiness in one trip. By reducing logistical downtime with actual training activity, students experience a more immersive training experience. Compared to per diem, training at T1G can provide up to 50% savings.

4. Your ENTIRE Team Can Shoot and Train at T1G

At T1G, your OIC, Medic, and RTO can all shoot and maneuver with their unit, which is critical to developing teamwork. Bring your Enablers. T1G provides relevant hands-on training for Mobility, HUMINT, and SIGINT Specialist as well.

5. Full-time Instructor Cadre

T1G's fiscal stability and excellent reputation make us a desirable employer for top-tier instructors and subject matter experts who are passionate about teaching. Our cadre's passion for teaching is fundamental to the evolution of T1G's relevant programs of instruction and scenario development capabilities.

6. Dedicated Training Enabler Staff

T1G's backside support eliminates downtime and increases training time. Students don't set up, break down, or clean ranges. If a vehicle breaks down, a replacement is available within minutes. Breaching students aren't hanging doors or clearing debris. They're building/blowing charges on Breach House-1 while the Enablers prepare Breach House-2. At T1G, students are always training.

7. CONUS/OCONUS Mobile Training Teams

T1G has deployed hundreds of Mobile Training Teams to five continents. Our experienced cadre of subject matter experts ensures professional programs of instruction on every effort.

8. T1G Memphis or OCONUS Training Complex

Your choice: East or West Hemisphere - whichever is more convenient to save time and money.

A Day on the Range

T1G's provides 33% more actual training time per day versus a government installation

Training at T1G maximizes your training dollars while compressing white space, providing you the best value for your effort.

Before your arrival, every training event is orchestrated to meet your goals. We continuously validate goals throughout execution and can make adjustments as needed. T1G's Logistics and Enabler staff organize the required ranges and venues, vehicles, targetry, and resources to eliminate downtime and maximize training.

Classroom and range proximity to lodging, chow, and the armory allow students to focus on their training. They're never waiting for transport.

Altogether, this translates into approximately 33% more actual training time at T1G than at a government installation, based on a 12-hour day.

T1G's Technical Liaisons create even more time value assisting your specific custom training scenarios or Full Mission Profiles. T1G's Training Enablers orchestrate the onsite support to maintain a fluid training tempo.

This illustration assumes no interruption in training due to a cease-fire or check fire due to a 3rd party event that is outside of the training unit's control on a government installation. It's difficult to quantify the time involved for the unit's preparation at its home station - however, it is significant.

Government Installation		T1G
Day Prior: Construct targets, prep vehicles, identify road guards and support personnel		Day Prior: Logistics handled by T1G Support Staff and Enablers
0500	Draw vehicles from motor pool	
0530	Draw ammo from the ASP	
0600		Reveille at our onsite lodging facility
0630	Draw weapons from the Armory	Breakfast at the onsite dining facility
0700		Draw weapons, ammo and move to ranges (5-minute walk)
0730	Move troops, weapons, ammo, targetry to the range and setup	TRAIN
0800		
0830	Wait for Range Control to deem range hot	
0900		
0930		
1000	TRAIN	
1030		
1100		
1130		
1200	Lunch	
1230		TRAIN
1300		
1330		
1400	TRAIN	
1430		
1500		
1530		
1600	Breakdown and clean range	
1630		
1700	Range control conducts inspection, deems range cold	
1730		Dinner at onsite dining facility
1800-TBD	Move troops and remaining ammo / weapons back, turn in all gear, prep for next day.	Turn in gear and equipment and commence rest cycle, or... ... Continue Training (no night training restrictions)

T1G Memphis

In-depth details at T1G.com



T1G meets or exceeds most Pre-Mission/Deployment Training and Full Mission Profile requirements for Special Operations Forces, or Conventional Special Purpose Force multidiscipline training and exercises. We facilitate training that isn't feasible at your home base/station. T1G Memphis is a 777-acre training complex supporting weapons and tactics, operational medicine, breaching, and on and off-road driving. Seamless transitions from flat ranges and the Rogers Range through the CQB Training Facility can culminate with scenario training exercises that include the 30-acre MOUT village with LZ/DZ and adjacent Live-Fire Wadi and Urban Combat Compound. Providing customized training to meet your specific requirements is our specialty.



INSET of North Training Area



2-Mile WPS Certified Unimproved Roads Track

Hogan's Alley

CQB Training Facility & 30-acre MOUT Complex

10-acre Live-Fire Wadi

5x Flat Ranges

13-acre East Wadi

2X Sniper Hide Towers

3x Classrooms

Gym Armory

LZ

Surveyed Drop Zone
840m x 720m
ZAR index #1022

LZ

Urban Combat Compound

Dojo

Chow Hall / Admin

Breaching Classroom

5-story Tower

2x Breaching Brickhouses

Confined Space
Collapsed Space Trainer

LZ

LODGING Facilities

4x Classrooms

Zero Noise/Fire Restrictions, Federal, State, and Local Deconflicted

Customized Full Mission Profile & Pre-Deployment Training

100% Custom Training Solutions in One Location for 12 to 300+ Operators

T1G is purpose-built to meet and exceed most requirements to support a wide range of customized Pre-deployment training and Full Mission Profile exercises. Scenario development that includes weapons and tactics, operational medicine, breaching, and technical driving is T1G's specialty. Our 777-acre training complex is purpose-built to provide practical training and support complex multi-discipline scenarios. Zero noise and fire restrictions allow 24/7 training evolutions in a relevant and realistic in-theatre environment. T1G offers an ideal solution for Tracking, Tagging, Locating and Sensitive Site Exploration with Opposing Forces or civilian role players. Signal Intelligence capable.

T1G's onsite capabilities include a wide array of multi-discipline scenario-based training for your specific mission:

- ▶ **Customized Situational Training Exercises**
- ▶ **Field Training Exercises**
- ▶ **Full Mission Profiles**
- ▶ **Mobile Force Protection/Advanced Performance Driving/Off-Road**

-
- Mobile Force Protection
 - Explosive Ordnance Disposal / IED
 - Intelligence Surveillance RECON
 - Advanced Urban Combat / SFAUC
 - Reconnaissance & Surveillance
 - Sensitive Site Exploitation
 - Direct Action
 - Advanced Skills Operations
 - Combat Search and Rescue
 - MFF HALO/HAHO DB SL
 - Advanced Performance Driving / Off-Road
 - Survival Escape Resistance and Evasion
 - Non-Combatant Evacuation Operations
 - Precision/Limited Scale Raids
 - Active Shooter Response
 - Mass Casualty Exercises
 - Convoy Live-Fire
 - Tracking Tagging Locating
 - K9 Training
 - JTAC Integration & Currency
 - Driving/Protective Motorcade
 - Mounted Operations / Military Convoy Ops
 - Vehicle Interdiction & Commandeering
 - Close Target Reconnaissance
 - Cordon & Search
 - Sniper Ops
 - Satellite Targets
 - Personal Security Detail
 - Dry Close Air Support

Multiple surveyed LZs and DZ are adjacent to our driving tracks, ranges, MOUT Village, and Urban Combat Compound with dual breachable Shoot Houses. The Urban Combat Compound, 10-acre Wadi, and 2.6-mile asphalt track are Live Fire capable. Both our Paved and Unimproved Roads tracks are WPS certified to provide a maximum range of driving conditions.



T1G is partnered with Paragon to facilitate technical surveillance requirements, including Close Target Reconnaissance, Tagging, Tracking & Locating, and COTS manipulation. T1G is Signal Intelligence capable of meeting your mission profile needs.



T1G Weapons & Tactics

T1G's Weapons & Tactics courses build on the combat-proven philosophy that **mindset**, **marksmanship**, and **manipulation** are the core skill set of a tactical shooter. We are uniquely capable of supporting (multiple) small groups through Special Forces Group sized elements **in one location** to maximize training and compress white space.

Our 777-acre purpose-built training complex supports a full range of training and critical exercise scenarios. Elements of Weapons and Tactics, Operational Medicine, Breaching, and On/Off-Road Driving can provide your specific and relevant in-theatre training requirements for Conventional, Special Purpose, and Special Operations Forces.



Weapons & Tactics Course Offerings

These courses offer a baseline for customizing the training scenario that you require. Your T1G Technical Liaison can help you build in other disciplines and scenario-based training exercises needed to meet your specific needs.

Tactical Carbine Operators Course

Students learn the basic-advanced tactical skills needed to operate in a hostile environment safely. They learn and review the tactical aspects of carbine handling and marksmanship before progressing to advanced tactical drills. Student capabilities are systematically brought to competency while safely employing their carbine and sidearm during movements to contact and demonstrate abilities to deliver rapid and accurate tactical marksmanship skills from 300 yards and in. (40-hour course)

Direct Action Pre-Shoot Course

For special operations personnel assigned to direct action/precision raid components which require sustainment and enhancement training. This intense package is designed to prepare SOF Operators to successfully complete the demanding qualification courses mandated by USASOC/USASFC/MARSOC/JSOC. Through extensive use of the newest computerized and pneumatic targeting systems, students experience training that just cannot be replicated by our competition. (40-hour course)



Mindset • Marksmanship • Manipulation

Protective Security Detail Course

Enables a Protective Security Detail to provide continuous 360-degree security in a hostile environment while ensuring the physical safety of the principal. Emphasis is placed upon working in teams using force-on-force scenarios under induced high-stress conditions. (40 to 96-hour courses available)

High-Risk Concealed Carry Course

Provides operators with skill set sustainment and enhancement training in those basic-advanced tactical skill sets needed to safely, quickly, and efficiently employ their handgun from concealed locations. This course prepares operators for demanding deployment profiles that require concealed carry applications. (40-hour course)

Advanced Counter Improvised Explosive Device (CIED) Course

Integrates the various methods utilized to counter the CBRNE/IED threat. Weapons Technical Intelligence collection and exploitation techniques to counter IED networks will be presented to provide the mental and material solutions necessary for effective force protection while enhancing existing security capabilities. (40-hour course)

Advanced Urban Combat Course

Designed to concentrate and integrate advanced urban combat profiles. SOF Explosive Entry, Advanced Combat Marksmanship, Basic Combat Trauma Training, Direct Action Tactics, and Situational Full Mission Profiles are some of the major components of this course. (40 to 96-hour courses available)



T1G Operational Medicine



T1G's medical training is built on the curricula of the Joint Special Operations Medical Training Center (JSOMTC) and the USSOCOM Tactical Combat Casualty Care (TCCC) courses. T1G's staff is seasoned veterans comprised of Army Special Forces, Navy SEALs, Marine Recon, Force Recon, MARSOC, and Air Force Pararescuemen.

The majority of our staff has served time at JSOMTC in instructor and NCOIC billets.

T1G's key differentiators:

- Completely relevant training
- Low student-to-instructor ratio
- **80% hands-on practical application training**
- Our willingness and capabilities to deliver a **custom curriculum** to meet your exacting requirements

T1G can fully implement **cadavers** and mannequins into any training exercise.

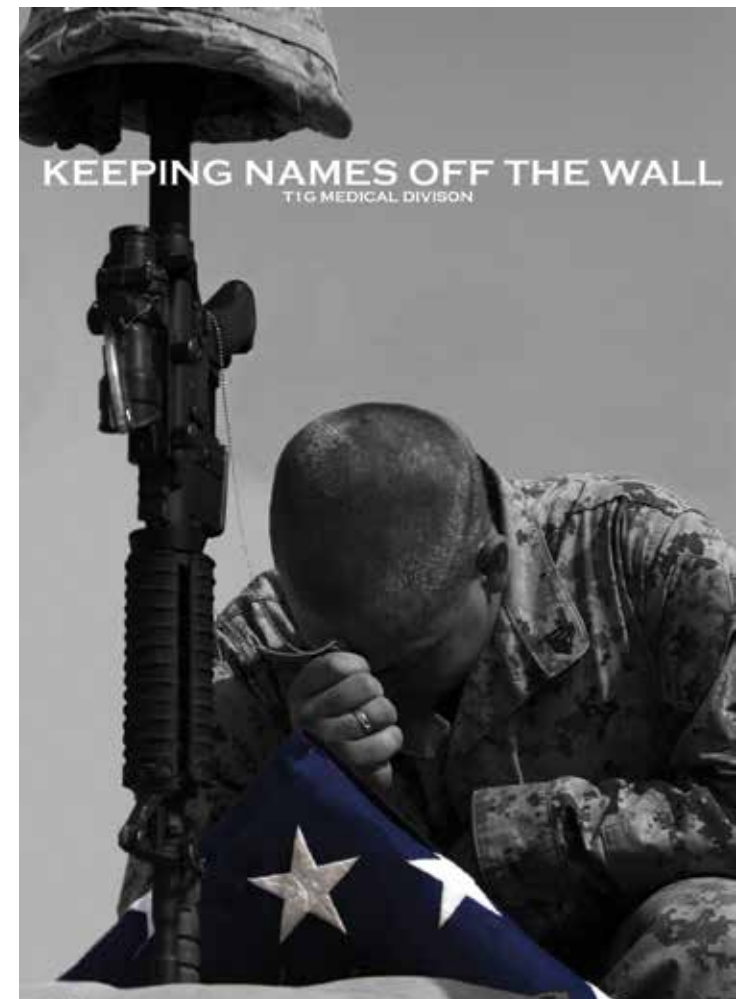
T1G's **9-second Drop Zone** and multiple **Helicopter Landing Zones** support a wide array of realistic training environments and critical mission exercise scenarios.

The **Confined Space/Collapsed Structure**, **H-60 Medical CASEVAC Trainer**, and **Unconventional Warfare Clinic** provide for a broad range of relevant training scenarios.

T1G Medical Course Offerings

Basic Combat Trauma Training (BCTT)

Based on the CoTCCC course approved by USSOCOM and designed for the operator level as outlined in the Pre-hospital Trauma Life Support (PHTLS) manual. While this course meets the described requirements, we exceed this by providing additional training for the burn and head trauma patients. We put primary emphasis on patient assessment skills, concepts, and principles. This course prepares the operator to confidently and effectively apply the life-saving techniques of TCCC. (32-hour course)



Advanced Combat Trauma Training (ACTT)

Based on the CoTCCC course approved by USSOCOM course and designed for the Medic level as outlined in the PHTLS manual. This course meets the outlined requirements; we exceed this by providing additional training to not only treat Point of Injury casualties and management these casualties for up to 24-hours. Extensive unit/service scenarios provide situational experience and stress that significantly enhances student learning. (40-hour course)

Advanced Combat Medic Course (ACMC)

Designed for the experienced medic/corpsman/provider, offering the advanced medical skills to aid in caring for the unit personnel and combat casualty. It is the perfect course for the medic/corpsman/provider who might be receiving the casualty, assisting in a field clinic/BAS, or has to provide extended care due to MEDEVAC delay. (40-hour course)

Applied Battlefield Medicine (ABM)

An intensive hands-on practicum for the medic/operator w/previous TCCC exposure. This modular course can include preset missions from planning through extended care. The student's skills, within their scope of practice, into challenging and lifesaving real-world scenarios such as IED, Opposing Forces, confined space and/or high angle situations with highly realistic stressors. (Customized 8-40 hour course)

SOF Tactical Medical Refresher (SOF TMR / ATP Refresher)

Meets the training requirements of the National Registry of Emergency Medical Technicians (NREMT) for recertification of the Paramedic and the USSOCOM Advanced Tactical Paramedic (ATP) certification. Designed to meet the skills sustainment of the EMT-P, as well as senior medics of the military - Army 18D, Air Force Pararescue, Marine Corps Amphibious Reconnaissance Corpsman, Navy IDC, and SPECWAR SEAL. The course affords recertification in BLS, ACLS, PALS, PEPP, TCCC, and PHTLS. Full mission profiles can be tailored to meet specific client requirements. (84-hour course)

Scenario Support

Purpose-built to support Operational Medicine



H-60 Medical CASEVAC Trainer



Unconventional Warfare Clinic



Confined Space/Collapsed Structure Trainer



These continuing education activities are approved by T1G, an organization accredited by the Commission on Accreditation for Pre-Hospital Continuing Education (CAPCE).

Medical Course Offerings, Cont'd.

Paramedic Recertification Course (PRC)

Meets the training/continuing education requirements of the National Registry of Emergency Medical Technicians-Paramedic (NREMT-P) and most states for recertification in BLS, ACLS, PALS, PEPP, TCCC, and PHTLS. (45-hour course)

Prolonged Field Care (PFC)

This course is designed for the experienced SOF Medic/Corpsman or provider. The syllabus covers critical care for the medical or trauma patient and the evacuation process while operating in an undeveloped theatre with extended evacuation times. Enhanced capabilities will be derived from interpretation of laboratory, diagnostic, monitoring and pre-mission planning considerations. Advanced management techniques are addressed as observed in modern theaters and trends throughout various medical communities. In-depth instruction of subjects will be through didactic presentations, skills stations, and an extensive culminating practical exercise that will test the material covered. (50-hour course)

Flight Paramedic Certification (FP-C) Course

A comprehensive training and exam preparation program. Upon completion, the candidate sits for the FP-C certification. The candidate must possess a current State or NREMT-P certification to attend. This course is designed specifically for the military medic and teaches critical care aeromedical concepts in an easy to understand format. The instructor staff has a 20% higher pass rate than the national average, accomplished using relevant and to the point instruction. This course provides insight and clarity to complex critical care medical concepts and procedures. (50-hour course)



These continuing education activities are approved by T1G, an organization accredited by the Commission on Accreditation for Pre-Hospital Continuing Education (CAPCE).

Customized H-60 Medical CASEVAC Trainer

The H-60 CASEVAC Trainer is a great alternative when aircraft cancel due to maintenance, weather, or unavailability.

The H-60 Medical Simulator increases proficiency during the tactical evacuation phase of care. The advanced simulator replicates the realism of transporting patients from the battlefield to a more secure location. The simulator allows the unit to configure the H-60 Medical Trainer as they would in the theater and facilitates combat medics to treat patients aboard an actual moving H-60 CASEVAC platform during day or night operations with realistic noise.

The H-60 Medical Simulator has the same limits in cabin height, width, and length. It has a high-power amplifier and speakers to introduce the aircraft noise. The aircraft interior lighting is white, green or red and uses high-powered fans to produce rotor wash. A single PC controls these functions, allowing instructors to reproduce the combat environment they would experience in-theater and increase the effectiveness of the training.



Confined Space/Collapsed Structure Trainer

Challenging and Relevant Training Experience

The CS/CS Trainer is designed to allow the most realistic training in an academic, controlled environment. It facilitates tasks and scenarios developed from over ten years of actual combat operations. The trainer allows multiple small teams to function at the same time in worst-case scenarios that emulate domestic or combat environment. It serves as an **elevated shooting platform** for Ranges 3 and 4, the Urban Combat Compound, and the 30-acre Military MOU.

- 11,500 cubic feet of operational space
- Multiple openings less than 24"
- Multiple openings greater than 24"
- Multiple entries: elevated or non-elevated
- Openings located on the top, sides, and bottom of the confined space trainer
- Various locations with and without obstructions
- Access: Horizontal and Vertical
- The ability to add smoke, light, and noise
- Elevated shooting platform



T1G Breaching



T1G employs the use of Current Force equipment that supports relevant operations in OIF/OEF. We use only time-tested and operationally proven tactics, techniques, and procedures. T1G's breaching programs provide the knowledge and skill to make dynamic entries through various targets using the most proven current explosive, mechanical, thermal, or ballistic breaching techniques.

Performance is instructor-evaluated through multiple live breach iterations and individual AAR's. Expert staff and on-site resources facilitate training and exercise scenarios that are highly relevant to the dynamic entry needs of Special Operations Forces. T1G can host your unique breaching requirements and mission profiles. Zero noise/fire restrictions and Federal, State, and Local deconfliction support advanced training scenarios that operators may require.

Dedicated breaching classrooms and many breaching-related assets are nearby which eliminates downtime for shuffling or transport.

T1G Breaching Course Offering

SOF Explosive Entry I

An intensive five-day training program designed to equip operators with the critical skills and confidence needed for safe and effective mechanical, ballistic, and explosive breaching. Operators build proficiency across three primary methods of entry — mechanical, ballistic, and explosive — from first principles through live charge deployment in five days. This course emphasizes safety, precision, and tactical efficiency, covering ballistic breaching weapon safety, selection, and implementation; mechanical breaching tool use for safe and effective entry; explosives handling definitions, classifications, characteristics, hazards, and priming; and explosive breaching charge calculations, construction, and deployment.

SOF Explosive Entry II

Builds on foundational method-of-entry skills with advanced charge construction, shockwave mechanics, and combat-simulated drills on complex targets — wall charges, window charges, and simultaneous entry TTPs that EE I doesn't reach. Building upon foundational knowledge, this course refines explosive theory, applied physics, and real-world breaching techniques to enhance tactical effectiveness. This hands-on training reinforces core breaching principles while introducing advanced methodologies through combat-simulated drills on complex targets — strengthening explosive selection and placement strategies for optimal energy transfer while minimizing net explosive weight (NEW) and maintaining maximum effectiveness and safety.

Dynamic Entry depends on a rapid, successful breach



Breaching, continued

Special Operations Forces Master Breacher 5 or 7-Day

Certification for operators who will plan, lead, and teach breaching operations. The course pushes beyond execution into the science behind every method of entry — explosive selection and placement strategy for maximum energy transfer, charge optimization to minimize net explosive weight, and the R&D process for developing new TTPs.

Operators leave certified to plan, execute, and instruct breaching operations. This certification-level course refines and enhances advanced breaching techniques, building upon prior training to ensure operators achieve complete mastery of explosive entry tactics, techniques, and procedures (TTPs). This hands-on, scenario-driven training reinforces fundamental principles while immersing participants in combat-simulated drills on increasingly complex targets — mastering explosive selection and placement strategy for maximum energy transfer, optimizing breaching efficiency while minimizing net explosive weight (NEW), and executing advanced real-world entry drills under simulated operational conditions.



2X Breaching Brickhouses adjacent to Breaching Classroom. T1G Enablers can reset one while students train on the other



Breaching Resources

Two Breach Houses, 30-Acre Military Operations Urban Terrain (MOUT) Complex, Live-Fire Urban Combat Compound, and 10-Acre Wadi are all engineered and purpose-built to support dynamic breaching and surgical entry scenarios.

T1G supports ballistic, thermal, mechanical, exothermic, and explosive breaching operations. T1G is resource-rich for training. All buildings, explosives handler's range, and galleries are well-stocked and maintained charge preparation rooms.

ZERO Fire/Noise Restrictions allow night training and Full Mission Profiles.



T1G Driving Capabilities

TWO WPS-Certified Driving Tracks Onsite

T1G provides you with extensive driving facilities and staff all in one location making it one of the most prestigious technical training venues in the world.

- 2.6-mile Paved **Live-Fire** Track - *WPS Certified*
- 2-mile Unimproved Roads Track - *WPS Certified*
- Miles of Engineered, Off-Road Driving Trails
- 10-acre **Live-Fire** Wadi
- 13-acre East Wadi



T1G is dedicated to training to the highest standards; the goal is always safe and secure transport in routine traffic, high stress, or life-threatening situations. Multiple driving environments integrate with main property assets to provide challenging and relevant training and scenarios.

Our training methods employ repetitive cycling and engaging of muscle memory, as well as familiarization of vehicle behavior and feedback at maximum limits. This ensures that drivers react instinctually to hazards and threats in the best possible way.

Our highly-experienced cadre, feature-rich driving facilities, and purpose-designed equipment allow us to push students to the limit while ensuring the safety of all involved. At the core of all T1G programs of instruction is vehicle preservation.

T1G Driving Course Offerings

Mobile Force Protection

Prepares students to react to threats against personnel and material in transit. Students learn various techniques to counter current threats encountered in environments such as Iraq and Afghanistan. The course is ideal for personnel deploying to high-risk environments. Emphasis is on maneuvering vehicles as a unit and responding to ambushes during mounted/ground mobile operations. (40-hour course)

Tactical Operators Course (TOC)

Aimed at the true security professional. Beginning with vehicle dynamics, operators learn to handle the car in real emergency situations. The course spans high-speed driving, barricade breaching, escape maneuvers, precision immobilization technique (PIT), and threat assessment and attack scenarios. (16-hour course)

Executive Protection Driver (EPD)

Combines all the hard skills introduced in TOC, and adds vehicle assault resistance (VAR) as well as close proximity and formation driving. (24-hour course)

T1G Key Differentiators: Extensive facilities support On, and Off-Road technical driving in one location, including WPS Certified High-Performance Track, WPS Certified Unimproved Roads Track, and *expert* staffing.

Motorcade Operators Course (MOC)

Combines a TOC with motorcade techniques. Students learn communication skills, high-speed convoy, and escape procedures. Class concludes with extensive drills and attack scenarios. (24-hour course)

Off-Road Techniques I and II

Use T1G HMMWV's or the platform you request, we explore the limits of what is and is not possible. Students are introduced to left foot braking, recovery techniques, road building, using momentum, and a wide array of recovery equipment. Course duration is one day. Off-Road Techniques II (ORT) More driving time, more obstacles, and more difficulty. (16-hour course) **Combine with TOC for true dynamic on/off road capabilities.*

SOF Protection and High-Risk Driver Course (SOF P & HRD)

A demanding syllabus comprised of personal force protection, mobility, vehicle commandeering, vehicle recovery, defensive and offensive driving (day/night) to both detect and counter terrorist threats in high-risk third world environments. Full-contact combat-ives and lethal/non-lethal self-defense methods are incorporated into the syllabus.



WPS Certified 2.6 Mile **Live-Fire** High-Performance Track



T1G's 2.6-mile paved track is expressly designed for **technical** driving and scenario-based training. Strategic **berms** at key choke points and integrated site features support relevant Situational Training Exercises. The 2,800-ft. straightaway supports high-speed maneuvers up to 100 mph as well as landing/take-off for STOL aircraft. WPS Certification and integrated 270-degree **live-fire** counter ambush area make T1G one of only several places in the country to conduct advanced training and Full Mission Profiles.

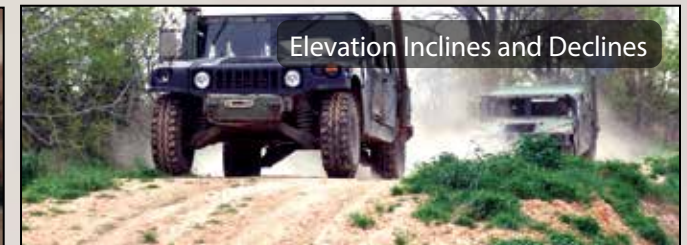


WPS Certified 2-Mile Unimproved Roads Track



Replicates relevant environments that require advanced driver skills to negotiate safely with speed and confidence.

It is designed to provide operators with expert instruction on moving quickly and safely through questionable terrain on realistic surfaces. T1G uses the proven training concept of repetitive cycling that engages muscle memory and familiarization with vehicle behavior and feedback at maximum limits. This combination ensures drivers automatically react to hazards or threats in the best possible way.



Off-Road Driving Trails and Engineered Challenges

Site Terrain Features

- 10-acre Live Fire Wadi
- 13-acre Sand Wadi
- Two Engineered Obstacle Courses
- Miles of Gravel, Dirt, and Sand Roads
- Creek Trails & Crossings
- Logs / Downed Trees
- Challenging Inclines / Declines
- Mixed Surface Variants
- Alternating Speed Bumps
- Alternating Angled Ruts
- Angled & Deep Ditches

There are miles of trails and purpose-built engineered challenges at T1G designed to support tactical convoy operations and off-road tactical, technical driver training. Supported by our WPS Certified Unimproved Roads Track, T1G can fulfill most any scenario development required.



Massive **LIVE-FIRE** Wadi and Two Urban Sniper Hides

The 10-acre Live-Fire Wadi is positioned between the Urban Combat Compound and 30-acre MOUT Complex with adjacent Helo Landing and Drop Zones.

Two Urban Sniper Hide Towers are located on the North and South perimeter providing a 360° view. The South structure offers a vantage point into the Urban Combat Compound as well.

The Wadi supports Medical, Weapons, Breaching, and Driving operations providing a superb environment for Pre-Deployment Training and Full Mission Profiles with a challenging terrain for operators to practice live-fire driving scenarios. T1G's zero noise/fire restrictions allow for around-the-clock evolutions and night STXs.

- Simulate **team rescue/casualty transport** to safety under (Simunitions) fire, including airlifts.
- Facilitates a wide array of **explosive and IED scenarios**.



30-Acre MOUT Village with DZ/LZ

T1G's 30-acre MOUT Village is comprised of multiple complex structures. It is adjacent to the Sims CQB Training Center and DZ/HLZ. It is directly adjacent to the 10-Acre Wadi and two Urban Sniper Hide Towers. The 840m x 720m Drop Zone (ZAR Index #1022) supports advanced scenario development and Full Mission Profiles. The MOUT Village can be deconflicted with the 5-Story Tower and the CS/CS Tower for simultaneous Sniper-assisted assault exercises. The MOUT village is an excellent environment for Tracking, Tagging, Locating and Sensitive Site Exploitation with Opposing Forces or civilian role players.

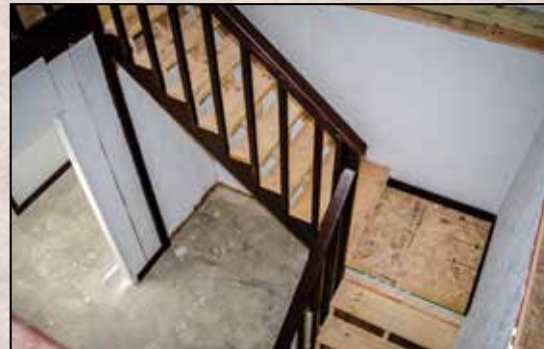


Force-On-Force Sims CQB Training Center

T1G's new Force-On-Force Training facility is situated in the Northwest corner of the 30-acre MOUT Village, supported by the LZ/DZ and integrated into the site's roadways. It is easily integrated into scenarios and Full Mission Profiles. The facility is 9,375 sq. ft. and features two stories with six stairwells, multiple 1st and 2nd-floor entrances, 24 rooms, and 40 interior doors, strobes, sound system, as well as various hidden areas perfect for canine training with explosives.

Forty-eight closed-circuit cameras record every area, projected in the lobby area via One-Eye projection for all to review and providing instant after action reports. A master control room gives override controls for every light as well as control over audio and video distraction features.

It is purposefully designed to provide four 12-man stacks with realistic and relevant force-on-force training scenarios.



Live-Fire Urban Combat Compound

T1G's **Live-Fire** Urban Combat Compound is purpose-built to instill the skills that novice and expert operators require to execute successful missions. Versatile layout configurations provide relevant scenarios and facilitate effective techniques and strategies for smooth live-fire urban combat operations. Sniper-initiated assault training/exercise can easily be incorporated, enhancing mission dynamics and interoperability.

The compound has a graveled courtyard with an indigenous 9' compound wall surrounding both shooting houses. Compound wall has multiple explosive and vehicular breach points (indigenous gates and breaching sections) with multiple ingresses and egress points integrated to the site's road network.

- **Fully-ballistic** to 7.62mm Ball
- **Maximum Net Explosive Weight .29**
- **No M855 or Penetrator**
- **Houses stand 15 meters apart**
- **Surrounded by indigenous gates and 9' walls**
- **Reconfigurable for realistic industrial or residential scenarios**
- **Multiple, fully-breachable entry points**
 - Interior/Exterior Explosive
 - Ballistic
 - Mechanical
 - Thermal



Professional Evaluator Catwalks

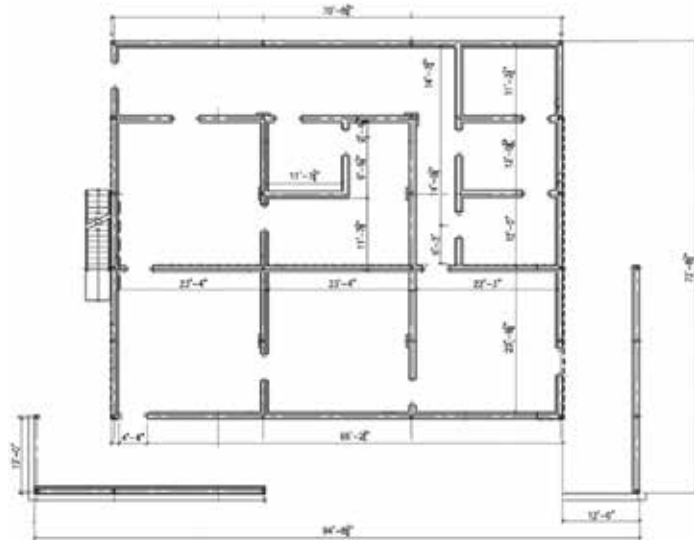
Total room-to-room exposure allows facilitators perfect viewpoints for start/stop after-action review and video.



TWO Adjacent Shoot Houses

Quickly reconfigurable with multiple fully-breachable entry points

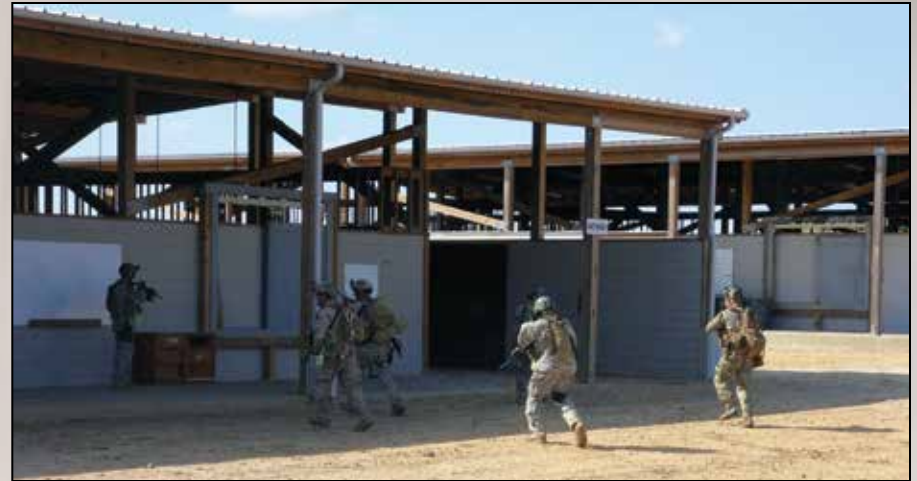
Shoot House 1: 4,200 sq. ft.



Shoot House 2: 8,000 sq. ft.



Maximum Net Explosive Weight .29 No M855 or Penetrator



100-Yard Multipurpose Turner Range

Targetry supports threat/non-threat discrimination

Range 2 is the ideal environment to access and enhance a shooter's reactionary rifle skills. (T1G Rogers Range is the better choice for pistols.)

Range 2 builds the fundamental skills required before the T1G Shoot Houses and offers remedial support for those not quite proficient.

- 100-yard Multipurpose Single-Direction Range with 20 lanes
- A pneumatic, computerized 90° turning targeting system
- Assess capabilities and vet group's skill sets quickly
- Address deficiencies in speed with threat/non-threat discrimination
- Supports pistol, shotgun, machine gun, and rifle up to 7.62mm



150-yard Multipurpose Range

From zero to 150 yards and beyond, there's no better range

Range 3 supports the skills required to survive and succeed from point-of-contact to 150 yards out with pistol and rifle – arguably the most crucial range skills in combat.

Each of 40 firing lanes has a turner plus two head plate arrays, a steel torso, and up to four runners. Four industrial strength tracks and six trolleys span Range 3's 140-foot width. Runners can be steel or paper, threat or non-threat. Paper turners can either face or edge you, helping to train target discrimination in a shoot or no-shoot scenarios.

Each head plate (two per firing lane) can present a bank of six 8-inch reactive head plates providing instant audible feedback, just like the steel torso targets. **AR550 Steel provides immediate feedback** that operators require to know if what they're doing is right. Without audible or visual conscious feedback, there is no opportunity to build subconscious memory.

The runners are capable of moving cutouts such as a vehicle to create a hostage scenario for sniper training. Multiple towers with elevated shooting platforms are conveniently located about 300 yards away providing true sniper over-watch characteristics.



Rogers Range • 8-Lane

Quickly refines rapid and accurate shooting skills

The **T1G Rogers Range** develops the crucial ability to rapidly acquire and engage adversaries in close quarters. It's fundamental to survival and success, while supporting fast target discrimination.

Computer-controlled pneumatic operation of eight lanes presents shooters with seven AR550 targets at seven to twenty yards. Nine primary courses of fire are designed to push and stretch the shooter's abilities. Throughout the courses of fire, 8" steel targets are only exposed for .5 to .75 of a second.

The steel targets are reactive in design. They must be successfully hit in order to stop them; peripheral hits or fragments do not stop them. This instills the paramount skill of "following through" until the adversary is neutralized. Repetition develops the reactionary shooter skills required to negotiate partial targets that are moving quickly.

The Rogers Range is one of the most popular features at **T1G**. Shooters can measurably increase their confidence and success in rapid, accurate, and discretionary firing scenarios.

- ***M-4 conversion kits in 9mm available***
- ***Shotgun Course available with M-4 and Pistol courses***



SOF Skills Complex | Multipurpose Range

An ideal environment for Multidiscipline skills training

T1G Range 8 – the (SOF) Special Operations Force Skills Complex – is designed with the combat shooter in mind.

SOF Skills Complex challenges the shooter on various combat shooting skill-sets through both speed and repetition, during multiple target engagement scenarios.

These ranges are designed to develop speed and accuracy and to force shooters to push their speed while competing.

Designed to be an individual, team or "shooter vs. shooter" training range, all while exercising combat skills training objectives.

At A Glance

- Each range is steel capable, both static and reactive steel targetry.
- Each shooting bay provides a different target array that allows two shooters to compete against each other for speed/competition.
- Each range is 7 meters to 25 meters, to allow pistol at shorter distances (7 Meters) and M4 Carbine (25 meters)



Range 4 – 300 yard 270° Hogan's Alley Multipurpose Range

Range 4 (Hogan's Alley) can safely host a force of 100. Whether mounted or dismounted, TTPs are exercised with scenario-focused live-fire or Simunitions exercises to refine, enhance, or validate the force's Standard Operating Procedures and Immediate Action Drills. Unique is the inclusion of USDAAT models for units that train on worst-case scenarios. Full Mission Profile Situational Training Exercises (STX) to include movement to contact, contact, immediate action and break from contact drills are safely and efficiently exercised.

Adjacent **5-Story Tower** | **CS/CS Trainer** are deconflicted.

- Approx. 240,000 square feet
- Safely supports up to 100 shooters
- Four access points allow shooting from a moving or static vehicle
- Configurable with multiple static and steel target arrays
- Ideal for large groups engaged in Round-Robin style training
- Designed for mobile fire and maneuver via foot or vehicle
- Simulate urban environments with target vehicles and moveable building facades
- Facilitates 360° "off the X" training scenarios with Simunitions
- Intermediate range immediate action drills and moving vehicle drills
- Pistol, shotgun, machine gun, and rifle up to .50 caliber
- Supports non-fragmentation practice projectiles



Supports All Practical Fire and Training Scenarios



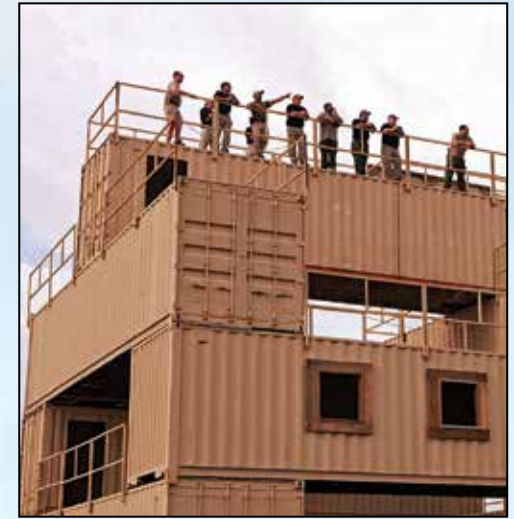
Multiple Towers, Helo Landing Zone, and 300 yard Range

Safe and Ideal Environment for Critical and Fundamental Multidiscipline Skills Training

The purpose-built and uniquely collocated ranges, training areas, structures, and simulators create one of the best training environments students can experience. The proximity of multiple towers adjacent to **Range 3**, **Range 4**, the **Shoot Houses**, and Military **MOUT Complex** facilitate training that is difficult if not impossible to duplicate on most other government or private facilities.

The 5-story tower offers *vertical closed structure* training. Both towers offer multipurpose tactical design and are adjacent to and the **Confined Space / Collapsed Structure Trainer**. A large **Helicopter Landing Zone** supports all. The towers facilitate multiple hook & climb, high angle rescue/recovery, and high-line transfer capabilities with primary, secondary, and tertiary anchor points to support technical rescue, rappel, and ascension system/profiles. The towers offset positions serve as the 325 yd. and 350 yd. firing points for **Range 4**.

The **towers** can be de-conflicted to support stationary and moving target engagement courses of fire on *both Ranges 3 and 4*. With **T1G** pre-qualification in support of culminating Situational Training Exercises, you can conduct simultaneous sniper initiated assault, pre-selected target reduction (PTR), and over-watching sniper support profiles on the **Shoot Houses** in the Urban Combat Compound (385 yd. shot).



1000m Known Distance (KD) Rifle Range

Carriage-type "pits" support precise data collection and confirmation



The KD Rifle Range is perfect for Sniper & Defensive Designated Marksman Teams to zero, collect and confirm data out to 1000m from raised firing points graduated in 100m increments. Firing points and pits support up to 11 two-man (shooter & observer) teams per relay for day/night precision courses of fire/training sessions.

- Range Pits area has conventional target carriages for safe precision manual shot marking with 1", 3", and 5" spotters
- KD Range supports Lateral Moving, Stop & Go, and Limited Exposure Bobbing Targets for development/refinement/confirmation of individual shooter's leads on moving targets when run manually by their Pit crew
- Range supports Carbines and Rifles from 5.56mm up to the newer .338 Lapua / Norma Magnum platforms



1000m Unknown Distance (UKD) Rifle Range

A multitude of varied static reactive steel targetry and vehicle hulks support ground-level and elevated applications

Target arrays on the UKD Rifle Range are configurable to client-specified parameters for multi-team day/night unknown distance courses of fire or team competitions. Eleven firing lines across multiple elevations and terrain types challenge shooters to range targets without known reference points — replicating operational shooting conditions. Range supports up to 11 two-man team firing lines per relay.

UKD Range and EVSP targetry includes but is not limited to:

- Steel Swingers
- Challenge Trees
- Breast Plates
- Head Plates
- Hotel / Tango Targets
- Special Effect Targets
- Static Vehicle Hulks on Request



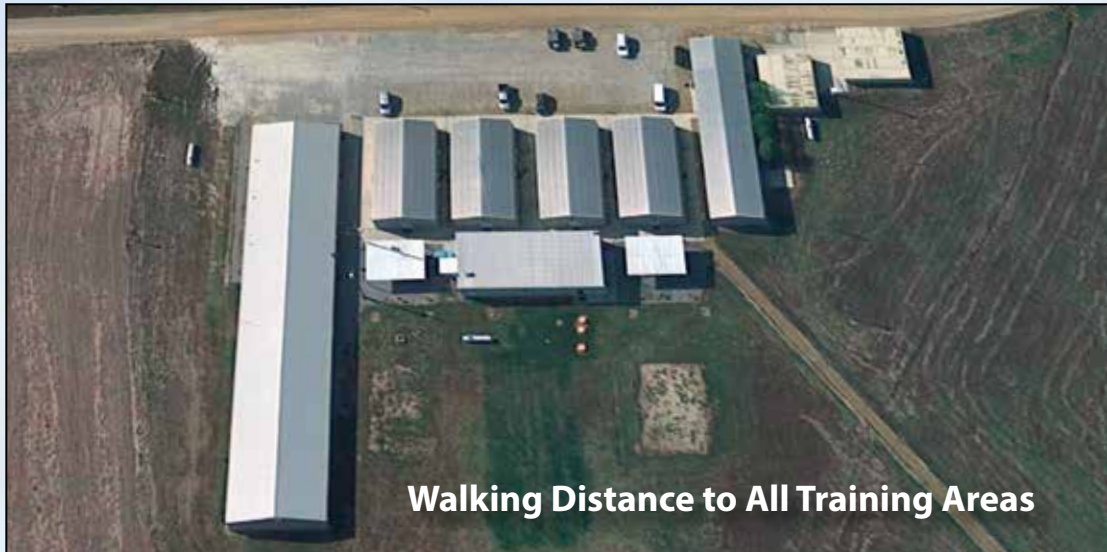
Off-Site Capabilities

Always an array of "fresh" deconflicted satellite venues

T1G's multilevel deconflicted satellite venues offer a variety of "Fresh" realistic and challenging target site options to facilitate Full Mission Profile exercise development and execution. **NOTE:** These locations are subject to change - your T1G Liaison can give you the current target opportunities.



On-Site Lodging



Showers • Laundry • Wi-Fi • Satellite TV • Gym

T1G's centrally-located facilities provide more efficient use of every operator's time and a significant cost saving for lodging and meals. More training time with reduced costs translates to more value for every effort.

- 2-minute walk to Chow Hall, under 5-minute to the Armory & most classrooms
- Pricing translates into large savings over per diem.
- **Zero hassles for transit and gear storage** and significantly reduced risk and chance of "off-property incidents."
- **The lodging facility (LFAC) has six buildings**, including a collocated 24/7 vending, laundry, shower, and bathroom facility (male and female). Laundry facility provides a 50" flat screen TV. Four 700 sq. ft. team rooms, each with 50" flat screen, Satellite TV, and Wi-Fi.
- **Four securable buildings** with private rooms for up to two SNCOIC or OIC plus two additional buildings. Each building provides ample chairs, tables, whiteboard, refrigerator, microwave, and coffee. Individual lockers and linens are provided. Outside gathering area with barbecue pits, tables, etc.

Dining Facility (D-Fac) seats 60+



Fitness Center • DoJo • Common Areas



(11) Climate-Controlled Classrooms

Collocated with Training Areas



T1G positions classrooms close to where students need them. The property design and classroom layout efficiency reduce downtime to almost zero.

Classroom features:

- *Less than 8-minutes to walk to any classroom*
- Climate-Controlled
- Projector • Audio/Visual
- Computer Link • Wi Fi
- Each Seat 18-24 (1x with 50)
- Three WT Classrooms with adjoining team rooms and breakout areas

T1G Armory

DoD 5100.76-M compliant, BATF approved secure storage facilities

DoD 5100.76-M compliant, BATF approved Secure Storage Facilities

- Arms Rooms, Ammunition Magazines, Explosive Bunkers
- Double-locked, electronically alarmed & LLE-monitored system
- Receiving Authority Licensed / Approved
- MilStrip and direct shipping of class V materials recommended in advance





T1G.com

Phone: 01.866.496.9916

Instagram @t1g.training

Facebook.com/T1GTraining

Cage Code 4MMG6
UEI LW5BG8KKU8B5